



Lake and Pond Solutions, LLC

W4950 County Road A
Elkhorn, WI 53121
Office (262) 742 - 2600
www.lakeandpondsolutions.com
jeff@lakeandpondsolutions.com

May 2026

Full maps showing bathymetry, relative sediment hardness, and vegetative biovolume are presented below. For the bathymetric map, darker colors represent deep water. For the relative sediment hardness, darker colors represent harder bottom (like rock, gravel, or hard sand) while lighter colors represent softer bottom (like mud, silt, clay or soft sand). Generally, much of the lake had softer sediment with the main collection points looking to be in the deeper water. Finally, the vegetated biovolume heat map generally shows warmer colors where vegetation is taking up more of the water column. It should be noted that sonar units and BioBase software are generally less accurate for this analysis when water depths are less than 2-feet deep.

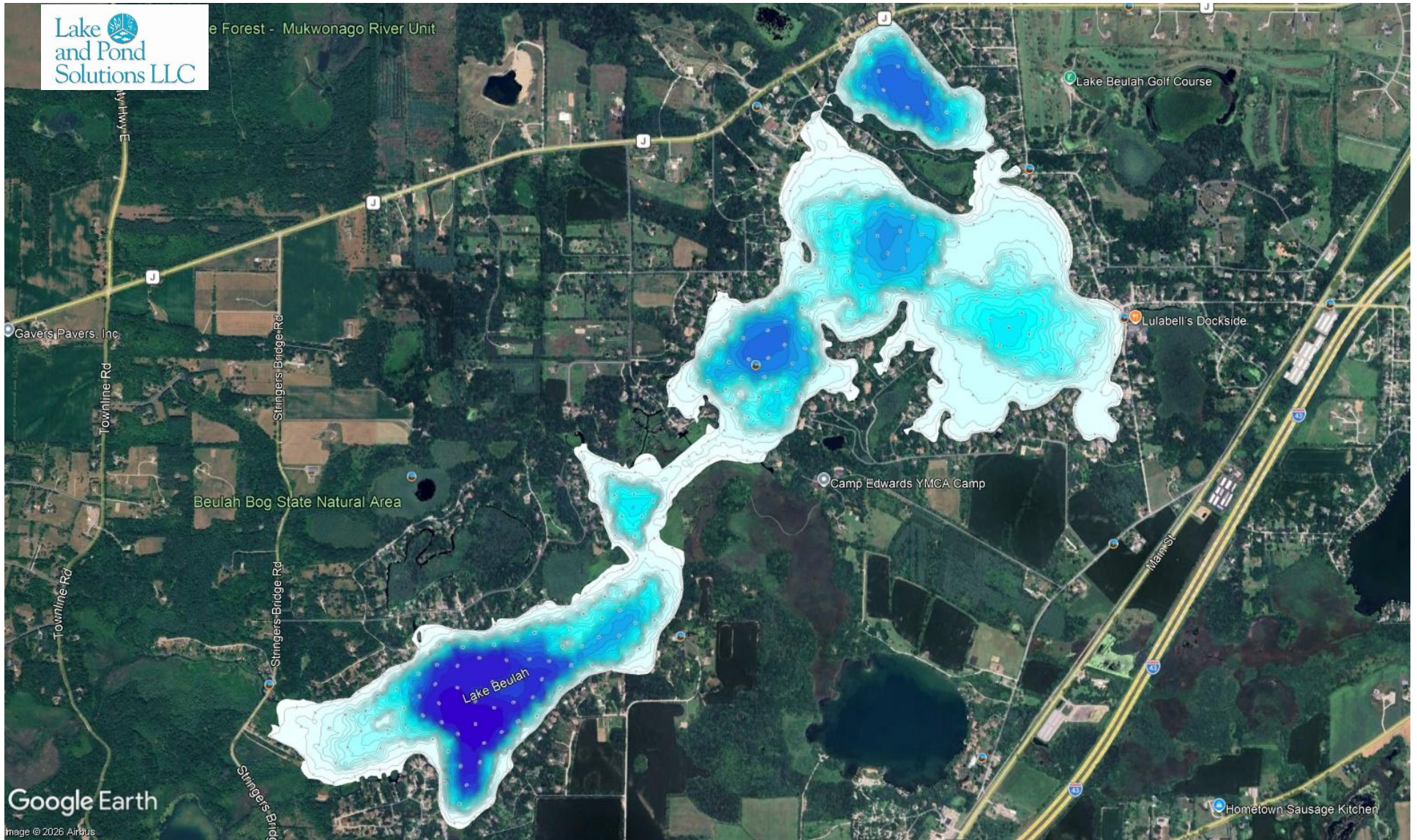
Waterbody Name	Lake Beulah
Survey Area	779.6 acres
Water Volume	18,154 acre-feet
Water Depth Max	64.10'
Water Depth Avg	22.03'
Vegetation Coverage	42.10%
Average Biovolume – entire lake	4.60%



Lake and Pond Solutions, LLC

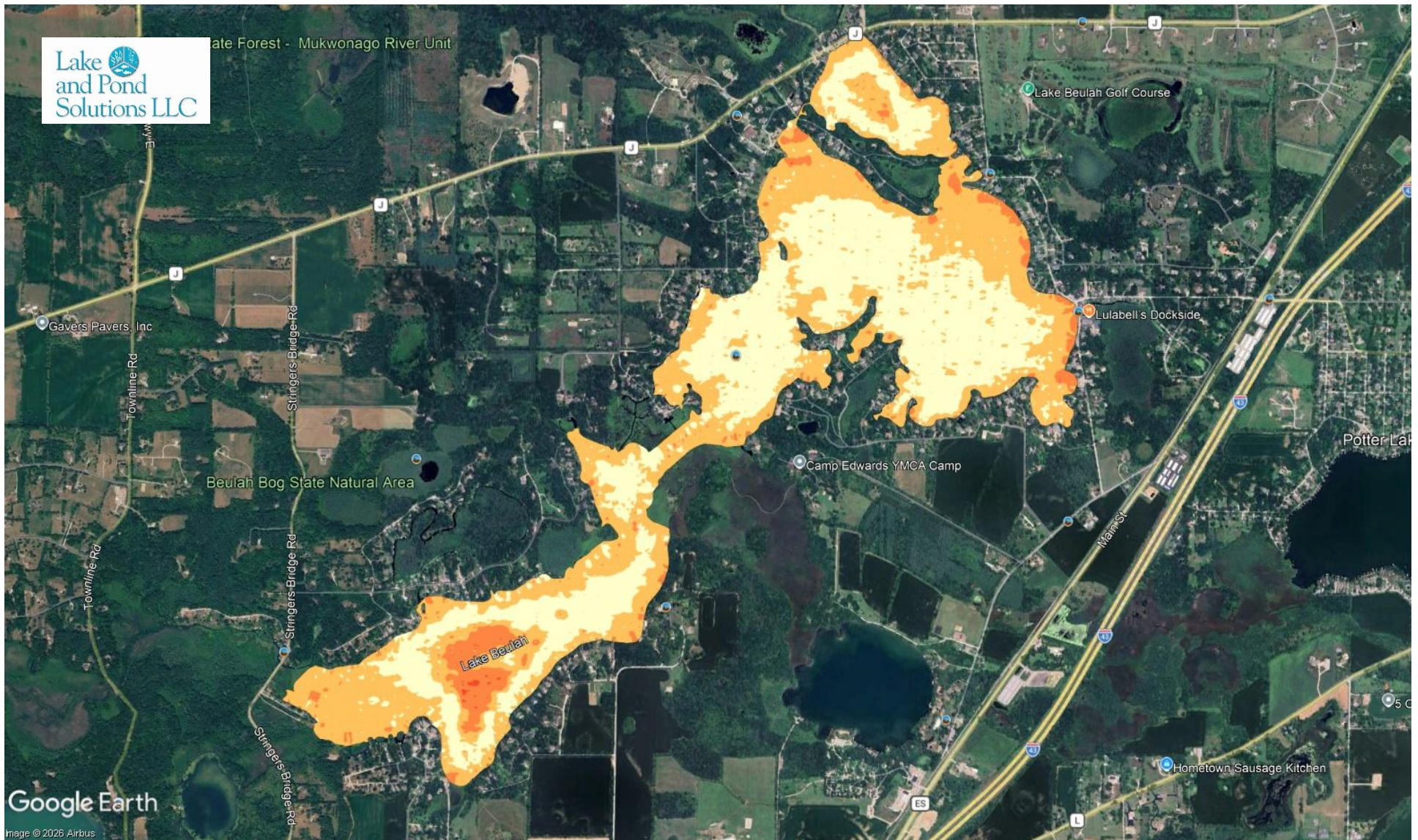
PROVIDING ENVIRONMENTALLY SOUND AQUATIC MANAGEMENT SOLUTIONS

LAKE BEULAH BATHYMETRY



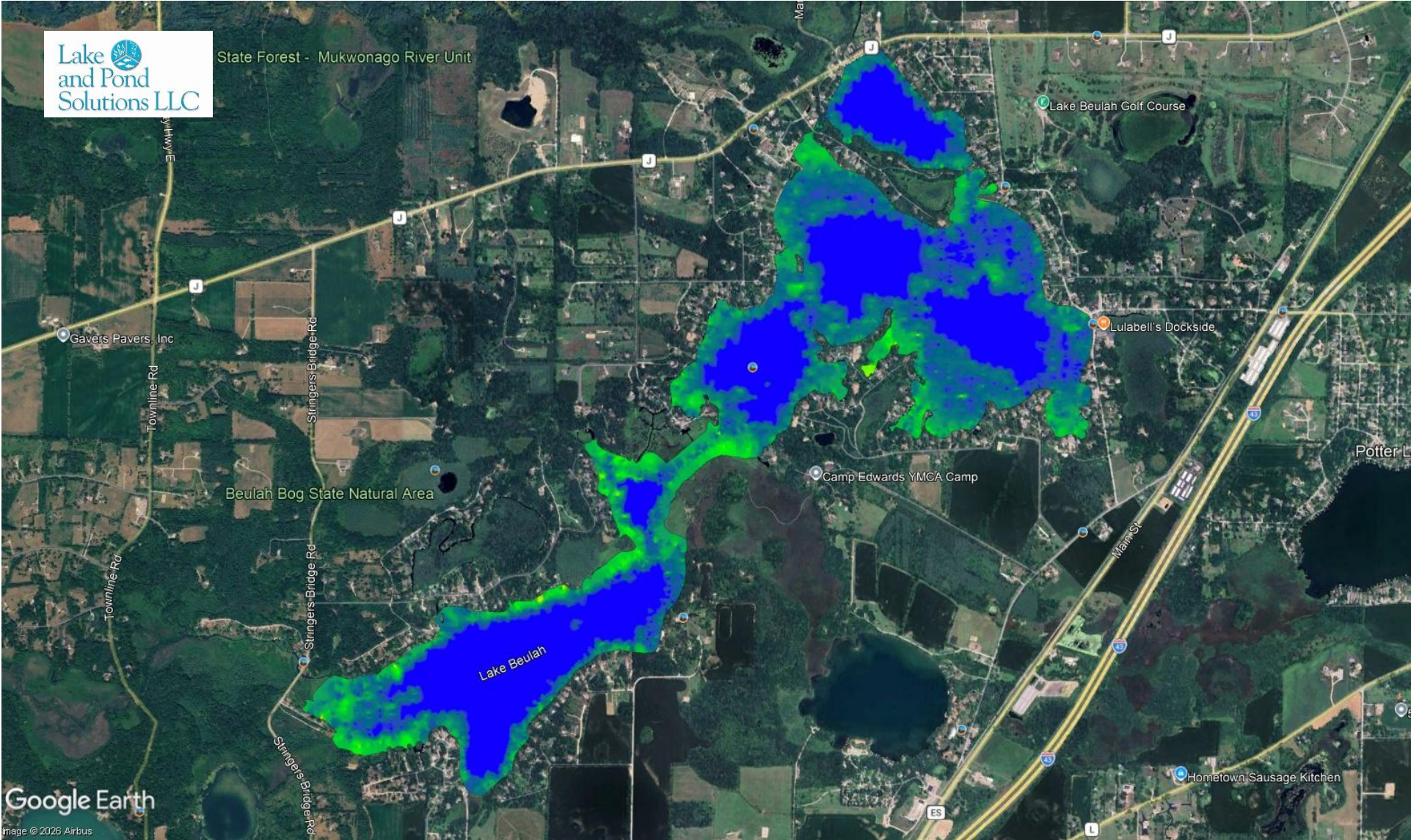
Darker colors represent deeper water

LAKE BEULAH RELATIVE SEDIMENT HARDNESS



Darker colors represent relatively harder bottom

LAKE BEULAH VEGETATED BIOVOLUME HEAT MAP



Warmer colors represent more vegetated biovolume